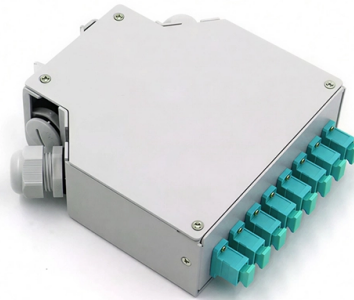


Parameters of enclosed cold aisle in computer room



Overview

Cold aisle containment encloses the aisle where cold supply air flows to IT equipment intakes. It is used for the newly used computer room. The study shows that cold and hot air mix at two sides and top of free open cold and hot aisles, which reduces the. Cold Aisle Containment isolates the cooled supply air from the cooling units within direct proximity of the air intake of critical equipment. This separation is vital for maintaining optimal temperatures and ensuring the efficient operation of servers. To. What is open aisle containment?

Traditional open aisle data centers use perimeter PAC (precision air conditioning) or CRAC (computer room air conditioning) units to channel cold air up through a raised floor void via grilles positioned in front of the IT cabinets. In this guide, we'll break down how hot aisle and cold aisle configurations.



Article Content

Mar 12, 2026

Enclosed Enclosed aisle aisle effect effect on on cooling cooling ...

enclosed cold aisle are quite different from that of free open aisle. The maximum room temperature is 29.19 °C, and the temperatures of rack's front and back are uniform; the temperatures of...

Jul 14, 2025

Hot aisle/Cold Aisle Containment in Data Centers For Most ...

Modular Cold Aisle Containment Offers the core benefits of cold aisle containment with greater flexibility and at a lower cost Doors and baffles attach magnetically, eliminating the need for ...

Jun 15, 2026

Cold Aisle Containment in Data Centers | Subzero Engineering

Cold aisle containment systems use doors at aisle ends, ceiling panels or lids above racks, and structural frames to create enclosed zones where cold supply air flows directly to IT equipment intakes.

Jan 01, 2026

Aisle Containment Systems Physical Containment Systems

Door Options A choice of door options is available for use with the aisle containment system to provide the right combination of safety and security. Dual sliding doors or Vertical doors can be chosen for ...

Nov 19, 2025

Cold Aisle Containment: Complete Implementation Guide for Data ...

Complete cold aisle containment guide for data centers. Learn CAC benefits, implementation steps, and achieve 35% cooling cost reduction.

Apr 29, 2026

Design of Cold and Hot Aisle Isolation in Enclosed Computer Room of ...

The airflow organization in the equipment room completes the isolation of cold and hot aisles, which maximizes energy efficiency and achieves the purpose of energy conservation and emission reduction.

Mar 04, 2026

Enclosed aisle effect on cooling efficiency in small scale data center

In order to improve the cooling effect, two types of aisle enclosure can be adopted: one is full enclosed cold aisle, another is semi-enclosed cold aisle which is only enclosed from two sides ...

Apr 02, 2026

Hot And Cold Aisle Containment For Data Center Cooling

A typical Cold Aisle Containment system features enclosed cold aisles with doors at each end, a ceiling-mounted cooling system, and blanking panels to seal off unused server rack spaces. ...

May 07, 2026

Data Center Aisle Containment

In cold aisle configurations the supply air is contained and the hot discharge air allowed to return to the CRAC unit. Because the supply and return air are kept separate, the room temperature can be ...

May 16, 2026

A DEEP DIVE INTO THE WORLD OF HOT & COLD AISLE ...

Automation and Control Systems: Implement automated control systems that adjust cooling parameters based on real-time data, ensuring optimal conditions at all times.

Nov 15, 2025

Hot Aisle vs Cold Aisle Containment Explained (Data Center Cooling ...

In this guide, we'll break down how hot aisle and cold aisle configurations work, what containment systems do, and why airflow management is critical in today's high-density data centers.

Contact Us

For more information, pricing, or custom solutions, please contact us:

Website: <https://www.professionistidelverde.it>

Email: info@professionistidelverde.it

Phone: +49 176 4829 3715

Address: Friedrichstraße 123, 10117 Berlin, Germany

This document is for informational purposes only. Specifications subject to change without notice.

